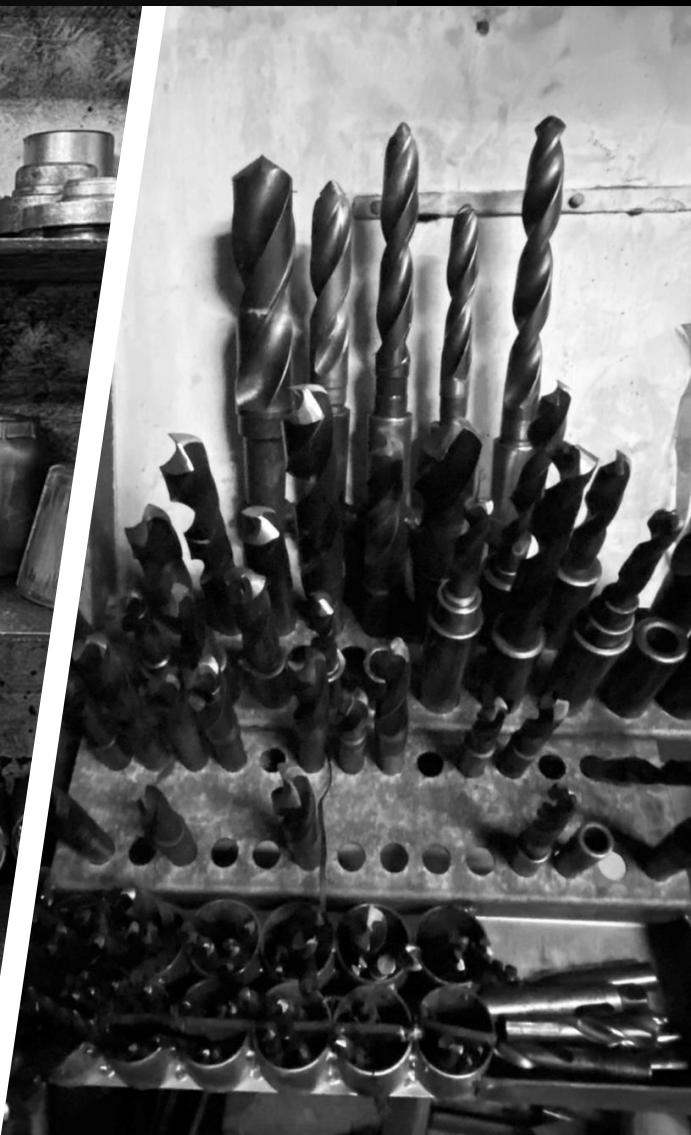




Di-Wu Machinery Co., Ltd.





The DIWU Machinery was established in 1976 and specialized in producing high pressure fittings to JIC, NPT, SAE, JIS, DIN, BSP and other international standards.

Our reputation for quality products and service has earned us customers' confidence and trust in a wide variety of industries. Today, we have become one of the leading manufacturers of hose fittings in Taiwan.

Our products are widely applied to different industrial equipment, such as construction machines, agricultural machines, plastic injection molding machine and paint spraying equipment...etc. In order to improve our services, we also devoted our attention to custom hose assemblies and design of hydraulic circuits to fulfill customers' requirements.

THE EXTREME TEAM

We have fittings to suit most of the common international standards as well as the specific requirements of several of our major OEM customers.



Drilling Tool



CNC Lathe



Bending Machine



Fittings Crimping

PREMIUM QUALITY

Each assembled kit is cut to your preferred length, fitted with our wide range of fittings and high-pressure couplings to help you make the right connection every time.



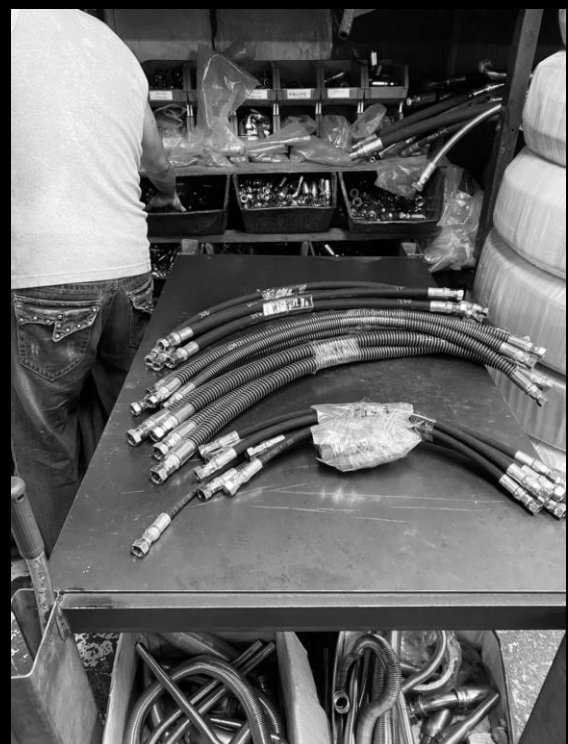
Hose Importer



Hydraulic Fitting



Hose Crimping



Hose Assembly

SATISFIED CLIENTS

From construction sites to production line, hydraulically operated systems are everywhere these days. Our products are ideal for most of these applications.



Construction Machinery



Maritime Construction



Manufacturer



Lifting Platform

HYDRAULIC FITTINGS

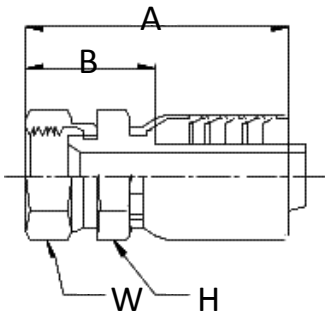
5th





JIC

- NJ Series
- MJ Series
- NJB Series
- NPT Series



NJ Series

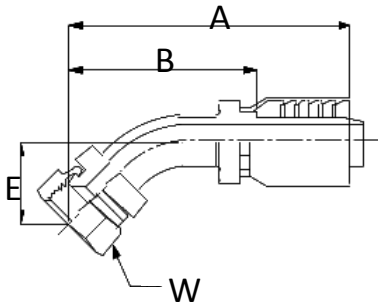
JIC 37° Female - Swivel Straight

JIC 37° Female - Swivel 45° Elbow

JIC 37° Female - Swivel 90° Elbow

Part Number	UNF thread	Hose I.D & Type			A mm	W mm	B mm	H mm
NJ04-04	7/16x20	-4	1/4	1W.2W	57	17	27	15
SUSNJ04-04	7/16x20	-4	1/4	1W.2W	57	17	27	15
NJ05-04	1/2x20	-4	1/4	1W.2W	58	19	30	17
NJ06-04	9/16x18	-4	1/4	1W.2W	59	19	30	17
NJ05-05	1/2x20	-5	5/16	1W.2W	58	19	30	17
NJ06-05	9/16x18	-5	5/16	1W.2W	65	19	33	19
NJ06-06	9/16x18	-6	3/8	1W.2W	63	19	31	19
SUSNJ06-06	9/16x18	-6	3/8	1W.2W	63	19	31	19
NJ07-06	5/8x18	-6	3/8	1W.2W	65	21	33	19
NJ08-06	3/4x16	-6	3/8	1W.2W	67	24	34	19
NJ08-08	3/4x16	-8	1/2	1W.2W	70	24	34	23
SUSNJ08-08	3/4x16	-8	1/2	1W.2W	70	24	34	23
NJ08-08 4S	3/4x16	-8	1/2	4S	70	24	34	23
NJ10-08	7/8x14	-8	1/2	1W.2W	72	27	36	23
NJ12-08	1-1/16x12	-8	1/2	1W.2W	75	32	40	26
NJ10-10	7/8x14	-10	5/8	1W.2W	74	27	38	27
SUSNJ10-10	7/8x14	-10	5/8	1W.2W	74	27	38	27
NJ10-10 4S	7/8x14	-10	5/8	4S	84	27	38	27
NJ12-10 4S	1-1/16x12	-10	5/8	4S	87	32	40	32
NJ10-12	7/8x14	-12	3/4	1W.2W	82	27	38	32
NJ12-12	1-1/16x12	-12	3/4	1W.2W	82	32	40	29
SUSNJ12-12	1-1/16x12	-12	3/4	1W.2W	82	32	40	29
NJ12-12 4S	1-1/16x12	-12	3/4	4S	94	32	40	32
NJ16-12 4S	1-5/16x12	-12	3/4	4S	95	41	42	32
NJ12-16	1-1/16x12	-16	1	1W.2W	92	32	40	38
NJ16-16	1-5/16x12	-16	1	1W.2W	94	41	45	38
SUSNJ16-16	1-5/16x12	-16	1	1W.2W	94	41	45	38
NJ16-16 4S	1-5/16x12	-16	1	4S	110	41	45	38
NJ20-16 4S	1-5/8x12	-16	1	4S	112	50	47	46
NJ16-20 4S	1-5/16x12	-20	1-1/4	4S	115	41	50	46
NJ20-20	1-5/8x12	-20	1-1/4	1W.2W	111	50	53	46
SUSNJ20-20	1-5/8x12	-20	1-1/4	1W.2W	111	50	53	46
NJ20-20 4S	1-5/8x12	-20	1-1/4	4S	119	50	53	46
SUSNJ24-24	1-7/8x12	-24	1-1/2	1W.2W	123	57	56	55
NJ24-24 4S	1-7/8x12	-24	1-1/2	4S	123	57	56	55
NJ32-32 4S	2-1/2x12	-32	2	4S	148	75	70	65

Note: "SUS" is Stainless Steel Fitting



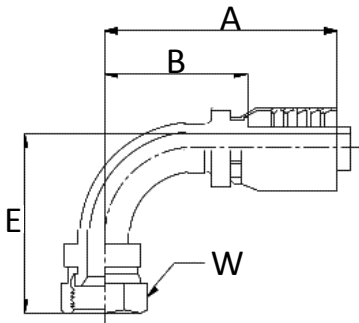
NJ Series

JIC 37° Female - Swivel Straight

JIC 37° Female - Swivel 45° Elbow

JIC 37° Female - Swivel 90° Elbow

Part Number	UNF thread	Hose I.D & Type			A mm	W mm	B mm	E mm
4NJ04-04	7/16x20	-4	1/4	1W.2W	81	17	50	18
4NJ06-04	9/16x18	-4	1/4	1W.2W	83	19	54	18
4NJ06-06	9/16x18	-6	3/8	1W.2W	95	19	62	20
4NJ08-06	3/4x16	-6	3/8	1W.2W	95	24	64	22
4NJ08-08	3/4x16	-8	1/2	1W.2W	110	24	73	28
4NJ08-08 4S	3/4x16	-8	1/2	4S	110	24	73	28
4NJ10-08	7/8x14	-8	1/2	1W.2W	100	27	65	25
4NJ10-08 4S	7/8x14	-8	1/2	4S	100	27	65	25
4NJ10-10	7/8x14	-10	5/8	1W.2W	110	27	73	27
4NJ10-10 4S	7/8x14	-10	5/8	4S	120	27	73	27
4NJ12-12	1-1/16x12	-12	3/4	1W.2W	115	32	67	28
4NJ12-12 4S	1-1/16x12	-12	3/4	4S	125	32	70	35
4NJ16-16	1-5/16x12	-16	1	1W.2W	125	41	74	38
4NJ16-16 4S	1-5/16x12	-16	1	4S	140	41	78	38
4NJ20-20	1-5/8x12	-20	1-1/4	1W.2W	180	50	115	53
4NJ20-20 4S	1-5/8x12	-20	1-1/4	4S	190	50	115	53



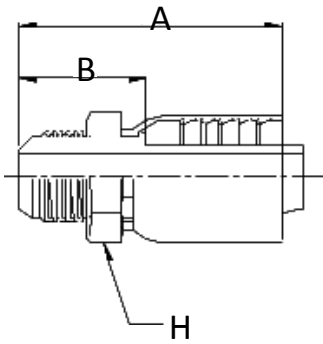
NJ Series

JIC 37° Female - Swivel Straight

JIC 37° Female - Swivel 45° Elbow

JIC 37° Female - Swivel 90° Elbow

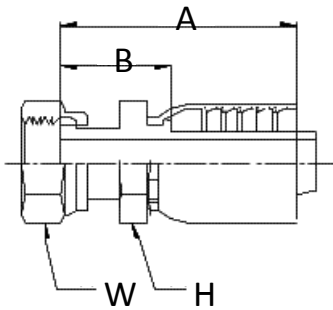
Part Number	UNF thread	Hose I.D & Type			A mm	W mm	B mm	E mm
9NJ04-04	7/16x20	-4	1/4	1W.2W	62	17	35	30
9NJ06-04	9/16x18	-4	1/4	1W.2W	62	19	35	31
9NJ06-06	9/16x18	-6	3/8	1W.2W	74	19	42	35
9NJ08-06	3/4x16	-6	3/8	1W.2W	74	24	42	35
9NJ08-08	3/4x16	-8	1/2	1W.2W	88	24	52	44
9NJ08-08 4S	3/4x16	-8	1/2	4S	88	24	52	44
9NJ10-08	7/8x14	-8	1/2	1W.2W	88	27	52	44
9NJ10-08 4S	7/8x14	-8	1/2	4S	88	27	52	44
9NJ10-10	7/8x14	-10	5/8	1W.2W	90	27	52	48
9NJ10-10 4S	7/8x14	-10	5/8	4S	100	27	52	48
9NJ12-10	1-1/16x12	-10	5/8	1W.2W	90	32	52	49
9NJ12-12	1-1/16x12	-12	3/4	1W.2W	107	32	62	60
9NJ12-12 4S	1-1/16x12	-12	3/4	4S	117	32	62	60
9NJ16-16	1-5/16x12	-16	1	1W.2W	120	41	70	66
9NJ16-16 4S	1-5/16x12	-16	1	4S	135	44	70	66
9NJ20-20	1-5/8x12	-20	1-1/4	1W.2W	158	52	100	90
9NJ20-20 4S	1-5/8x12	-20	1-1/4	4S	168	52	100	90
9NJ24-24 4S	1-7/8x12	-24	1-1/2	4S	170	57	105	105
9NJ32-32 4S	2-1/2x12	-32	2	4S	188	75	110	125



MJ Series

JIC 37° Male - Rigid Straight

Part Number	UNF thread	Hose I.D & Type			A mm	W mm	B mm
MJ04-04	7/16x20	-4	1/4	1W.2W	56	17	28
MJ06-06	9/16x18	-6	3/8	1W.2W	62	19	31
MJ08-06	3/4x16	-6	3/8	1W.2W	64	23	33
MJ08-08	3/4x16	-8	1/2	1W.2W	70	23	35
MJ08-08 4S	3/4x16	-8	1/2	4S	70	23	35
MJ10-08	7/8x14	-8	1/2	1W.2W	71	27	36
MJ10-08 4S	7/8x14	-8	1/2	4S	71	27	36
MJ10-10	7/8x14	-10	5/8	1W.2W	74	27	38
MJ10-10 4S	7/8x14	-10	5/8	4S	84	27	38
MJ12-12	1-1/16x12	-12	3/4	1W.2W	83	32	40
MJ12-12 4S	1-1/16x12	-12	3/4	4S	93	32	40
MJ16-16	1-5/16x12	-16	1	1W.2W	92	38	42
MJ16-16 4S	1-5/16x12	-16	1	4S	108	38	42
MJ20-20	1-5/8x12	-20	1-1/4	1W.2W	110	50	60
MJ24-24	1-7/8x12	-24	1-1/2	1W.2W	125	57	65



NJB Series

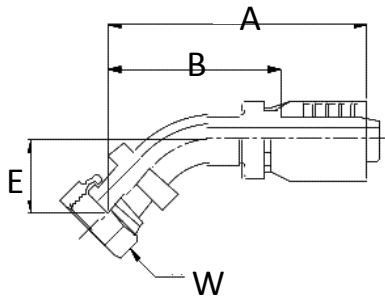
SAE Female Flat Face - Swivel Straight

SAE Female Flat Face - Swivel 45° Elbow

SAE Female Flat Face - Swivel 90° Elbow

Part Number	UNF thread	Hose I.D & Type			A mm	W mm	B mm	H mm
NJB04-04	9/16x18	-4	1/4	1W.2W	59	19	29	17
SUSNJB04-04	9/16x18	-4	1/4	1W.2W	59	19	29	17
NJB06-04	11/16x16	-4	1/4	1W.2W	62	22	31	19
NJB06-06	11/16x16	-6	3/8	1W.2W	72	22	40	19
SUSNJB06-06	11/16x16	-6	3/8	1W.2W	72	22	40	19
NJB08-06	13/16x16	-6	3/8	1W.2W	73	27	41	21
NJB08-08	13/16x16	-8	1/2	1W.2W	76	27	40	23
SUSNJB08-08	13/16x16	-8	1/2	1W.2W	76	27	40	23
NJB08-08 4S	13/16x16	-8	1/2	4S	76	27	40	23
NJB10-08	1x14	-8	1/2	1W.2W	76	32	40	27
NJB10-08 4S	1x14	-8	1/2	4S	76	32	40	27
NJB10-10	1x14	-10	5/8	1W.2W	74	32	48	27
SUSNJB10-10	1x14	-10	5/8	1W.2W	74	32	48	27
NJB10-10 4S	1x14	-10	5/8	4S	84	32	48	27
NJB12-10	1-3/16x12	-10	5/8	1W.2W	74	36	48	32
NJB12-10 4S	1-3/16x12	-10	5/8	4S	85	36	48	32
NJB12-12	1-3/16x12	-12	3/4	1W.2W	85	36	45	32
SUSNJB12-12	1-3/16x12	-12	3/4	1W.2W	85	36	45	32
NJB12-12 4S	1-3/16x12	-12	3/4	4S	95	36	45	32
NJB16-12	1-7/16x12	-12	3/4	1W.2W	85	41	45	38
NJB16-12 4S	1-7/16x12	-12	3/4	4S	97	41	45	38
NJB16-16	1-7/16x12	-16	1	1W.2W	102	41	58	38
SUSNJB16-16	1-7/16x12	-16	1	1W.2W	102	41	58	38
NJB16-16 4S	1-7/16x12	-16	1	4S	118	41	58	38
NJB20-16	1-11/16x12	-16	1	1W.2W	105	50	60	46
NJB20-16 4S	1-11/16x12	-16	1	4S	120	50	60	46
NJB20-20	1-11/16x12	-20	1-1/4	1W.2W	124	50	66	46
SUSNJB20-20	1-11/16x12	-20	1-1/4	1W.2W	124	50	66	46
NJB20-20 4S	1-11/16x12	-20	1-1/4	4S	134	50	66	46
NJB24-24	2x12	-24	1-1/2	1W.2W	135	57	70	55

Note: "SUS" is Stainless Steel Fitting



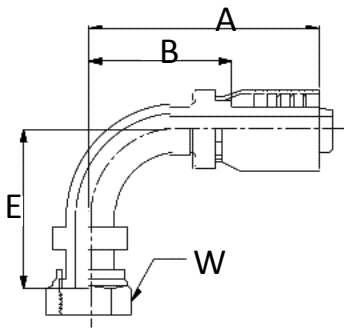
NJB Series

SAE Female Flat Face - Swivel Straight

SAE Female Flat Face - Swivel 45° Elbow

SAE Female Flat Face - Swivel 90° Elbow

Part Number	UNF thread	Hose I.D & Type			A mm	W mm	B mm	E mm
4NJB04-04	9/16x18	-4	1/4	1W.2W	81	19	50	18
4NJB06-04	11/16x16	-4	1/4	1W.2W	83	22	54	18
4NJB06-06	11/16x16	-6	3/8	1W.2W	95	22	62	20
4NJB08-06	13/16x16	-6	3/8	1W.2W	95	27	64	20
4NJB08-08	13/16x16	-8	1/2	1W.2W	110	27	73	28
4NJB08-08 4S	13/16x16	-8	1/2	4S	110	27	73	28
4NJB10-08	1x14	-8	1/2	1W.2W	110	32	73	28
4NJB10-08 4S	1x14	-8	1/2	4S	110	32	73	28
4NJB10-10	1x14	-10	5/8	1W.2W	113	32	77	25
4NJB10-10 4S	1x14	-10	5/8	4S	123	32	77	25
4NJB12-10	1-3/16x12	-10	5/8	1W.2W	115	36	77	30
4NJB12-10 4S	1-3/16x12	-10	5/8	4S	123	36	77	30
4NJB12-12	1-3/16x12	-12	3/4	1W.2W	120	36	78	33
4NJB12-12 4S	1-3/16x12	-12	3/4	4S	130	36	78	33
4NJB16-16	1-7/16x12	-16	1	1W.2W	124	41	80	35
4NJB16-16 4S	1-7/16x12	-16	1	4S	140	41	80	35
4NJB20-20	1-11/16x12	-20	1-1/4	1W.2W	180	50	115	50
4NJB20-20 4S	1-11/16x12	-20	1-1/4	4S	190	50	115	50



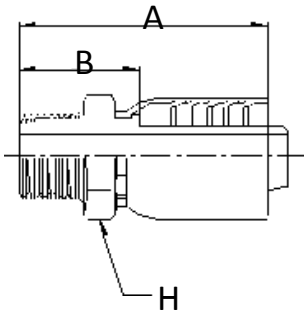
NJB Series

SAE Female Flat Face - Swivel Straight

SAE Female Flat Face - Swivel 45° Elbow

SAE Female Flat Face - Swivel 90° Elbow

Part Number	UNF thread	Hose I.D & Type			A mm	W mm	B mm	H mm
9NJB04-04	9/16x18	-4	1/4	1W.2W	62	19	35	30
9NJB06-04	11/16x16	-4	1/4	1W.2W	62	22	35	31
9NJB06-06	11/16x16	-6	3/8	1W.2W	74	22	42	35
9NJB08-06	13/16x16	-6	3/8	1W.2W	74	27	42	35
9NJB08-08	13/16x16	-8	1/2	1W.2W	85	27	48	45
9NJB08-08 4S	13/16x16	-8	1/2	4S	85	27	48	45
9NJB10-08	1x14	-8	1/2	1W.2W	88	32	52	46
9NJB10-08 4S	1x14	-8	1/2	4S	88	32	52	46
9NJB10-10	1x14	-10	5/8	1W.2W	102	32	55	50
9NJB10-10 4S	1x14	-10	5/8	4S	112	32	55	50
9NJB12-10	1-3/16x12	-10	5/8	1W.2W	107	36	60	60
9NJB12-10 4S	1-3/16x12	-10	5/8	4S	117	36	60	60
9NJB12-12	1-3/16x12	-12	3/4	1W.2W	105	36	63	60
9NJB12-12 4S	1-3/16x12	-12	3/4	4S	115	36	63	60
9NJB16-16	1-7/16x12	-16	1	1W.2W	112	41	68	88
9NJB16-16 4S	1-7/16x12	-16	1	4S	128	41	68	88
9NJB20-20	1-11/16x12	-20	1-1/4	1W.2W	160	50	100	90
9NJB20-20 4S	1-11/16x12	-20	1-1/4	4S	170	50	100	90
9NJB24-24	2x12	-24	1-1/2	1W.2W	173	57	105	105



NPT Series

NPT Male Pipe

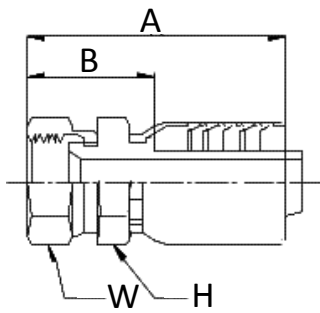
Part Number	NPT thread	Hose I.D & Type			A mm	H mm	B mm
NPT02-04	1/8x27	-4	1/4	1W.2W	52	17	23
NPT04-04	1/4x18	-4	1/4	1W.2W	56	17	28
SUSNPT04-04	1/4x18	-4	1/4	1W.2W	56	17	28
NPT06-04	3/8x18	-4	1/4	1W.2W	57	17	29
NPT04-06	1/4x18	-6	3/8	1W.2W	60	19	28
NPT06-06	3/8x18	-6	3/8	1W.2W	64	19	32
SUSNPT06-06	3/8x18	-6	3/8	1W.2W	64	19	32
NPT08-06	1/2x14	-6	3/8	1W.2W	65	19	32
NPT06-08	3/8x18	-8	1/2	1W.2W	65	23	29
NPT08-08	1/2x14	-8	1/2	1W.2W	72	23	36
SUSNPT08-08	1/2x14	-8	1/2	1W.2W	72	23	36
NPT08-08 4S	1/2x14	-8	1/2	4S	72	23	36
NPT12-10	3/4x14	-10	5/8	1W.2W	89	24	41
NPT12-12	3/4x14	-12	3/4	1W.2W	79	32	36
SUSNPT12-12	3/4x14	-12	3/4	1W.2W	79	32	36
NPT12-12 4S	3/4x14	-12	3/4	4S	89	32	36
NPT16-16	1x11-1/2	-16	1	1W.2W	92	38	42
SUSNPT16-16	1x11-1/2	-16	1	1W.2W	92	38	42
NPT16-16 4S	1x11-1/2	-16	1	4S	104	38	42
NPT20-20	1-1/4x11-1/2	-20	1-1/4	1W.2W	107	46	47
SUSNPT20-20	1-1/4x11-1/2	-20	1-1/4	1W.2W	107	46	47
NPT20-20 4S	1-1/4x11-1/2	-20	1-1/4	4S	117	46	47
NPT24-24 4S	1-1/2x11-1/2	-24	1-1/2	4S	113	55	48
NPT32-32 4S	2x11-1/2	-32	2	4S	140	64	61

Note: "SUS" is Stainless Steel Fitting



JIS

- NPF Series
- NU Series
- NPB Series
- MPF Series
- PT Series
- NM Series
- MFO Series
- MUL Series
- NMB Series

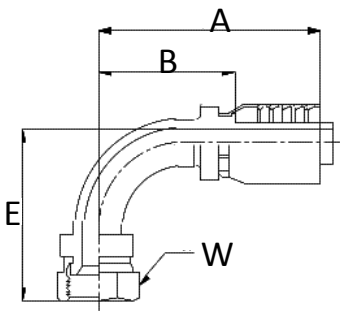


NPF Series

JIS 30° BSPP Female - Swivel Straight

JIS 30° BSPP Female - Swivel 90° Elbow

Part Number	BSP thread	Hose I.D & Type			A mm	W mm	B mm	H mm
NPF04-04	1/4x19	-4	1/4	1W.2W	59	19	32	17
NPF06-06	3/8x19	-6	3/8	1W.2W	67	22	36	19
NPF08-08	1/2x14	-8	1/2	1W.2W	72	27	35	23
NPF08-08 4S	1/2x14	-8	1/2	4S	72	27	35	23
NPF12-12	3/4x14	-12	3/4	1W.2W	84	36	41	32
NPF12-12 4S	3/4x14	-12	3/4	4S	94	36	41	32
NPF16-16	1x11	-16	1	1W.2W	94	41	48	38
NPF16-16 4S	1x11	-16	1	4S	105	41	48	38
NPF20-20	1-1/4x11	-20	1-1/4	1W.2W	110	50	52	46
NPF20-20 4S	1-1/4x11	-20	1-1/4	4S	121	50	52	46
NPF24-24 4S	1-1/2x11	-24	1-1/2	4S	122	57	57	55

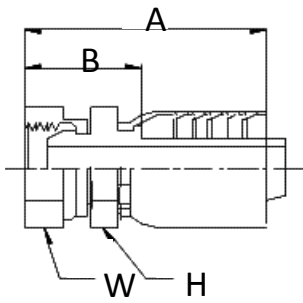


NPF Series

JIS 30° BSPP Female - Swivel Straight

JIS 30° BSPP Female - Swivel 90° Elbow

Part Number	BSP thread	Hose I.D & Type			A mm	W mm	B mm	E mm
9NPF04-04	1/4x19	-4	1/4	1W.2W	65	19	35	30
9NPF06-06	3/8x19	-6	3/8	1W.2W	75	22	43	37
9NPF08-08	1/2x14	-8	1/2	1W.2W	88	27	53	46
9NPF08-08 4S	1/2x14	-8	1/2	4S	88	27	53	46
9NPF12-12	3/4x14	-12	3/4	1W.2W	110	36	67	55
9NPF12-12 4S	3/4x14	-12	3/4	4S	115	36	67	55
9NPF16-16	1x11	-16	1	1W.2W	123	41	73	65
9NPF16-16 4S	1x11	-16	1	4S	133	41	73	65



NU Series

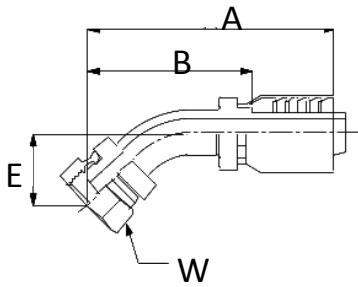
JIS/BSP Female 60° Cone - Swivel Straight

JIS/BSP Female 60° Cone - Swivel 45° Elbow

JIS/BSP Female 60° Cone - Swivel 90° Elbow

Part Number	BSP thread	Hose I.D & Type			A mm	W mm	B mm	H mm
NU04-04	1/4x19	-4	1/4	1W.2W	60	19	32	14
SUSNU04-04	1/4x19	-4	1/4	1W.2W	60	19	32	14
NU06-04	3/8x19	-4	1/4	1W.2W	60	21	32	17
NU06-06	3/8x19	-6	3/8	1W.2W	64	21	33	19
SUSNU06-06	3/8x19	-6	3/8	1W.2W	64	21	33	19
NU08-06	1/2x14	-6	3/8	1W.2W	65	27	33	21
NU08-08	1/2x14	-8	1/2	1W.2W	71	27	36	23
SUSNU08-08	1/2x14	-8	1/2	1W.2W	71	27	36	23
NU08-08 4S	1/2x14	-8	1/2	4S	71	27	36	23
NU12-10	3/4x14	-10	5/8	1W.2W	77	36	40	32
NU12-10 4S	3/4x14	-10	5/8	4S	87	36	40	32
NU12-12	3/4x14	-12	3/4	1W.2W	84	36	42	32
SUSNU12-12	3/4x14	-12	3/4	1W.2W	84	36	42	32
NU12-12 4S	3/4x14	-12	3/4	4S	96	36	42	32
NU16-12 4S	1x11	-12	3/4	4S	99	41	47	32
NU16-16	1x11	-16	1	1W.2W	96	41	43	38
SUSNU16-16	1x11	-16	1	1W.2W	96	41	43	38
NU16-16 4S	1x11	-16	1	4S	106	43	41	38
NU20-20	1-1/4x11	-20	1-1/4	1W.2W	111	50	58	46
SUSNU20-20	1-1/4x11	-20	1-1/4	1W.2W	111	50	58	46
NU20-20 4S	1-1/4x11	-20	1-1/4	4S	121	50	58	46
NU24-24 4S	1-1/2x11	-24	1-1/2	4S	125	60	60	55
NU32-32 4S	2x11	-32	2	4S	150	75	70	65

Note: "SUS" is Stainless Steel Fitting



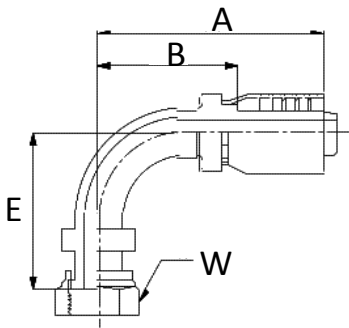
NU Series

JIS/BSP Female 60° Cone - Swivel Straight

JIS/BSP Female 60° Cone - Swivel 45° Elbow

JIS/BSP Female 60° Cone - Swivel 90° Elbow

Part Number	BSP thread	Hose I.D & Type			A mm	W mm	B mm	E mm
4NU04-04	1/4x19	-4	1/4	1W.2W	85	19	55	25
4NU06-04	3/8x19	-4	1/4	1W.2W	85	21	55	25
4NU06-06	3/8x19	-6	3/8	1W.2W	98	21	67	30
4NU08-06	1/2x14	-6	3/8	1W.2W	100	27	67	30
4NU08-08	1/2x14	-8	1/2	1W.2W	110	27	75	30
4NU08-08 4S	1/2x14	-8	1/2	4S	110	27	75	30
4NU12-12	3/4x14	-12	3/4	1W.2W	120	36	77	30
4NU12-12 4S	3/4x14	-12	3/4	4S	130	36	77	30
4NU16-16	1x11	-16	1	1W.2W	130	41	78	40
4NU16-16 4S	1x11	-16	1	4S	146	41	78	40
4NU20-20	1-1/4x11	-20	1-1/4	1W.2W	180	50	115	55
4NU20-20 4S	1-1/4x11	-20	1-1/4	4S	190	50	115	55



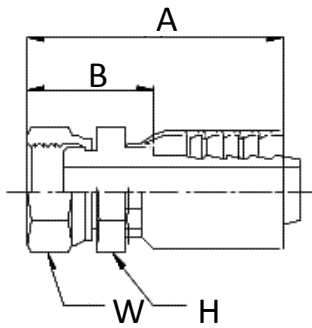
NU Series

JIS/BSP Female 60° Cone - Swivel Straight

JIS/BSP Female 60° Cone - Swivel 45° Elbow

JIS/BSP Female 60° Cone - Swivel 90° Elbow

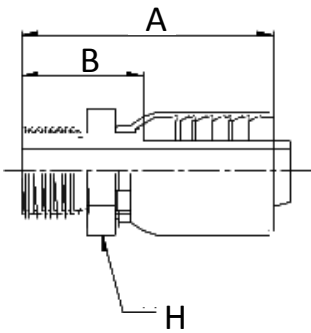
Part Number	BSP thread	Hose I.D & Type			A mm	W mm	B mm	E mm
9NU04-04	1/4x19	-4	1/4	1W.2W	62	19	33	35
9NU06-04	3/8x19	-4	1/4	1W.2W	62	21	33	36
9NU06-06	3/8x19	-6	3/8	1W.2W	75	21	43	40
9NU08-06	1/2x14	-6	3/8	1W.2W	75	27	43	41
9NU08-08	1/2x14	-8	1/2	1W.2W	85	27	52	48
9NU08-08 4S	1/2x14	-8	1/2	4S	85	27	52	48
9NU12-12	3/4x14	-12	3/4	1W.2W	105	36	62	64
9NU12-12 4S	3/4x14	-12	3/4	4S	115	36	62	64
9NU16-12 4S	1x11	-12	3/4	4S	115	41	62	65
9NU16-16	1x11	-16	1	1W.2W	120	41	72	75
9NU16-16 4S	1x11	-16	1	4S	130	41	72	75
9NU20-20	1-1/4x11	-20	1-1/4	1W.2W	150	50	92	105
9NU20-20 4S	1-1/4x11	-20	1-1/4	4S	160	50	92	105
9NU24-24 4S	1-1/2x11	-24	1-1/2	4S	170	60	105	105
9NU32-32 4S	2x11	-32	2	4S	188	75	110	125



NPB Series

BSP Female Flat Face - Swivel Straight

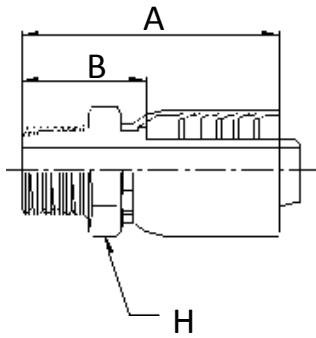
Part Number	BSP thread	Hose I.D & Type			A mm	W mm	B mm	H mm
NPB04-04	1/4x19	-4	1/4	1W.2W	59	19	32	17
NPB06-06	3/8x19	-6	3/8	1W.2W	64	22	35	19
NPB08-06	1/2x14	-6	3/8	1W.2W	65	27	33	19
NPB08-08	1/2x14	-8	1/2	1W.2W	72	27	35	23
NPB12-12	3/4x14	-12	3/4	1W.2W	84	36	41	32
NPB12-12 4S	3/4x14	-12	3/4	4S	94	36	41	32
NPB16-16	1x11	-16	1	1W.2W	94	41	48	38



MPF Series

JIS Male Stud

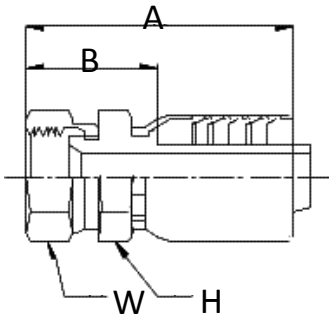
Part Number	BSP thread	Hose I.D & Type			A mm	H mm	B mm
MPF04-04	1/4x19	-4	1/4	1W.2W	54	17	26
MPF06-06	3/8x19	-6	3/8	1W.2W	62	22	31
MPF08-06	1/2x14	-6	3/8	1W.2W	65	27	31
MPF08-08	1/2x14	-8	1/2	1W.2W	70	27	34
MPF08-08 4S	1/2x14	-8	1/2	4S	70	27	34
MPF08-10 4S	1/2x14	-10	5/8	4S	80	27	34
MPF12-12	3/4x14	-12	3/4	1W.2W	80	36	36
MPF12-12 4S	3/4x14	-12	3/4	4S	90	36	36
MPF16-12 4S	1x11	-12	3/4	4S	94	41	42
MPF16-16	1x11	-16	1	1W.2W	94	41	40
MPF16-16 4S	1x11	-16	1	4S	102	41	40
MPF20-20 4S	1-1/4x11	-20	1-1/4	4S	112	50	44



PT Series

JIS/BSP Taper Male 60° Cone

Part Number	BSP thread	Hose I.D & Type			A mm	H mm	B mm
PT02-04	1/8x28	-4	1/4	1W.2W	52	17	23
PT04-04	1/4x19	-4	1/4	1W.2W	56	17	28
PT06-04	3/8x19	-4	1/4	1W.2W	57	17	29
PT04-06	1/4x19	-6	3/8	1W.2W	60	19	28
PT06-06	3/8x19	-6	3/8	1W.2W	64	19	32
PT08-06	1/2x14	-6	3/8	1W.2W	65	19	32
PT06-08	3/8x19	-8	1/2	1W.2W	65	23	29
PT08-08	1/2x14	-8	1/2	1W.2W	72	23	36
PT08-08 4S	1/2x14	-8	1/2	4S	72	23	36
PT12-12	3/4x14	-12	3/4	1W.2W	79	32	36
PT12-12 4S	3/4x14	-12	3/4	4S	89	32	36
PT16-16	1x11	-16	1	1W.2W	92	38	42
PT16-16 4S	1x11	-16	1	4S	104	38	42
PT20-20	1-1/4x11	-20	1-1/4	1W.2W	107	46	47
PT20-20 4S	1-1/4x11	-20	1-1/4	4S	117	46	47
PT24-24 4S	1-1/2x11	-24	1-1/2	4S	113	55	48
PT32-32 4S	2x11	-32	2	4S	140	64	61

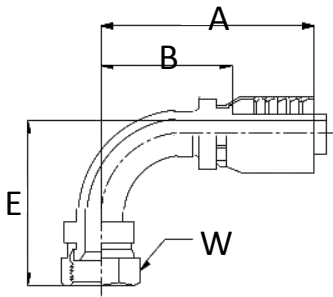


NM Series

JIS 30° Metric Female - Swivel Straight

JIS 30° Metric Female - Swivel 90° Elbow

Part Number	Metric thread	Hose I.D & Type			A mm	W mm	B mm	H mm
		-	I.D	Type				
NM12P1-04	M12x1.0	-4	1/4	1W.2W	57	17	29	15
NM12-04	M12x1.5	-4	1/4	1W.2W	57	17	29	15
NM14-04	M14x1.5	-4	1/4	1W.2W	59	19	31	17
NM16-04	M16x1.5	-4	1/4	1W.2W	59	21	31	17
NM18-04	M18x1.5	-4	1/4	1W.2W	61	24	31	17
NM14-06	M14x1.5	-6	3/8	1W.2W	65	19	33	19
NM16-06	M16x1.5	-6	3/8	1W.2W	65	21	33	19
NM18-06	M18x1.5	-6	3/8	1W.2W	67	24	34	19
NM20-06	M20x1.5	-6	3/8	1W.2W	69	27	37	23
NM18-08	M18x1.5	-8	1/2	1W.2W	70	24	35	23
NM20-08	M20x1.5	-8	1/2	1W.2W	72	27	36	23
NM20-08 4S	M20x1.5	-8	1/2	4S	72	27	36	23
NM22-08	M22x1.5	-8	1/2	1W.2W	72	27	36	23
NM22-08 4S	M22x1.5	-8	1/2	4S	73	27	36	23
NM24-08	M24x1.5	-8	1/2	1W.2W	77	32	40	23
NM24-08 4S	M24x1.5	-8	1/2	4S	77	32	40	23
NM24-10	M24x1.5	-10	5/8	1W.2W	76	32	39	27
NM24-10 4S	M24x1.5	-10	5/8	2W.4S	86	32	39	27
NM30-12	M30x1.5	-12	3/4	1W.2W	84	36	40	32
NM30-12 4S	M30x1.5	-12	3/4	4S	94	36	40	32
NM33-16	M33x1.5	-16	1	1W.2W	94	41	43	38
NM36-20	M36x1.5	-20	1-1/4	1W.2W	111	46	53	46
NM42-24	M42x1.5	-24	1-1/2	1W.2W	123	50	56	55

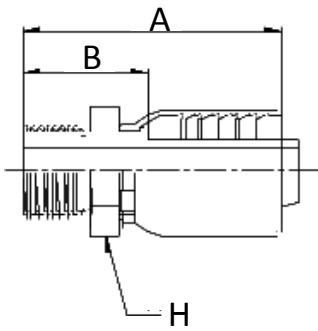


NM Series

JIS 30° Metric Female - Swivel Straight

JIS 30° Metric Female - Swivel 90° Elbow

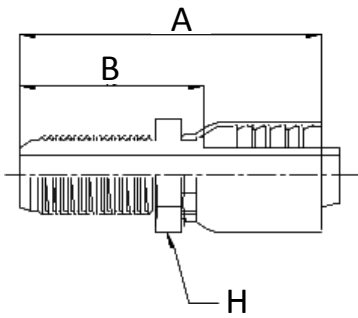
Part Number	Metric thread	Hose I.D & Type			A mm	W mm	B mm	E mm
		-	I.D	Type				
9NM14-04	M14x1.5	-4	1/4	1W.2W	62	19	34	32
9NM16-06	M16x1.5	-6	3/8	1W.2W	74	21	42	34
9NM18-06	M18x1.5	-6	3/8	1W.2W	44	24	42	34
9NM20-08	M20x1.5	-8	1/2	1W.2W	88	27	52	45
9NM20-08 4S	M20x1.5	-8	1/2	4S	88	27	52	45
9NM22-08	M22x1.5	-8	1/2	1W.2W	88	27	52	45
9NM22-08 4S	M22x1.5	-8	1/2	4S	88	27	52	45



MFO Series

JIS Metric Male With O-Ring

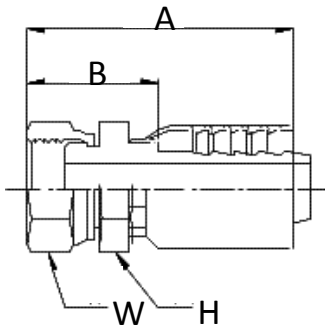
Part Number	Metric thread	Hose I.D & Type			A mm	H mm	B mm
MFO12P1-04	M12x1.0	-4	1/4	1W.2W	54	17	30
MFO14-04	M14x1.5	-4	1/4	1W.2W	54	17	30
MFO16-04	M16x1.5	-4	1/4	1W.2W	57	22	31
MFO18-06	M18x1.5	-6	3/8	1W.2W	62	22	31
MFO22-06	M22x1.5	-6	3/8	1W.2W	65	27	31
MFO20-08	M20x1.5	-8	1/2	1W.2W	70	27	32
MFO20-08 4S	M20x1.5	-8	1/2	4S	70	27	32
MFO22-08	M22x1.5	-8	1/2	1W.2W	70	27	33
MFO22-08 4S	M22x1.5	-8	1/2	4S	70	27	33
MFO24-08 4S	M24x1.5	-8	1/2	4S	76	36	40
MFO24-10 4S	M24x1.5	-10	5/8	4S	84	36	37
MFO42-16 4S	M42x1.5	-16	1	4S	102	50	40



MUL Series

JIS Metric Male Long Thread

Part Number	Metric thread	Hose I.D & Type			A mm	H mm	B mm
MUL12P1-04	M12x1.0	-4	1/4	1W.2W	72	17	43
MUL12-04	M12x1.5	-4	1/4	1W.2W	72	17	43
MUL14-04	M14x1.5	-4	1/4	1W.2W	75	17	46
MUL16-04	M16x1.5	-4	1/4	1W.2W	79	21	50
MUL14-06	M14x1.5	-6	3/8	1W.2W	85	21	54
MUL16-06	M16x1.5	-6	3/8	1W.2W	85	21	54
MUL18-06	M18x1.5	-6	3/8	1W.2W	85	21	54
MUL20-06	M20x1.5	-6	3/8	1W.2W	84	27	53
MUL20-08	M20x1.5	-8	1/2	1W.2W	88	27	53
MUL22-08	M22x1.5	-8	1/2	1W.2W	88	27	53



NMB Series

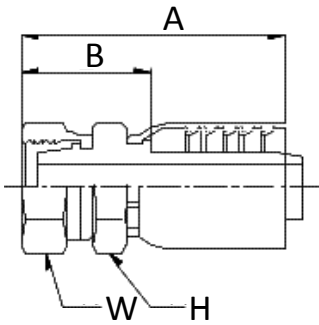
JIS Metric Swivel Female Flat Face

Part Number	Metric thread	Hose I.D & Type			A mm	W mm	B mm	H mm
NMB20-04	M20x1.5	-4	1/4	1W.2W	62	27	30	19
NMB20-06	M20x1.5	-6	3/8	1W.2W	66	27	33	21
NMB22-06	M22x1.5	-6	3/8	1W.2W	67	27	34	21
NMB20-08	M20x1.5	-8	1/2	1W.2W	71	27	35	23
NMB22-08	M22x1.5	-8	1/2	1W.2W	72	27	36	23
NMB24-08	M24x1.5	-8	1/2	1W.2W	76	32	36	23
NMB27-12	M27x1.5	-12	3/4	1W.2W	84	36	40	32



DIN

- NML Series
- NOS Series
- MFL Series
- MFS Series
- SY Series



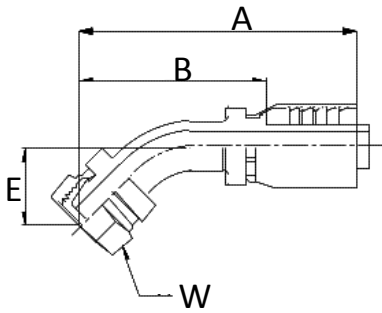
NML Series

DIN 20 078 A Light Series Metric Female - Swivel Straight

DIN 20 078 A Light Series Metric Female - Swivel 45° Elbow

DIN 20 078 A Light Series Metric Female - Swivel 90° Elbow

Part Number	Metric thread		Hose I.D & Type			A	W	B	H
						mm	mm	mm	mm
NML12-04	M12x1.5	06L	-4	1/4	1W.2W	58	17	29	17
NML14-04	M14x1.5	08L	-4	1/4	1W.2W	58	19	29	17
NML16-04	M16x1.5	10L	-4	1/4	1W.2W	60	21	32	17
NML16-06	M16x1.5	10L	-6	3/8	1W.2W	64	21	33	19
NML18-06	M18x1.5	12L	-6	3/8	1W.2W	66	24	34	19
NML20-06	M20x1.5	14L	-6	3/8	1W.2W	67	27	34	19
NML20-08	M20x1.5	14L	-8	1/2	1W.2W	68	27	32	23
NML22-08	M22x1.5	15L	-8	1/2	1W.2W	74	27	38	23
NML24-08	M24x1.5	17L	-8	1/2	1W.2W	76	32	40	23
NML30-12 4S	M30x1.5	22L	-12	3/4	4S	92	36	39	32
NML30P2-12 4S	M30x2.0	22L	-12	3/4	4S	92	36	39	32
NML36-12 4S	M36x1.5	28L	-12	3/4	4S	95	41	42	38
NML36-16 4S	M36x1.5	28L	-16	1	4S	106	41	43	38
NML36P2-16 4S	M36x2.0	28L	-16	1	4S	106	41	43	38
NML45P2-20	M45x2.0	35L	-20	1-1/4	1W.2W	111	50	53	46
NML45P2-20 4S	M45x2.0	35L	-20	1-1/4	4S	120	50	53	46



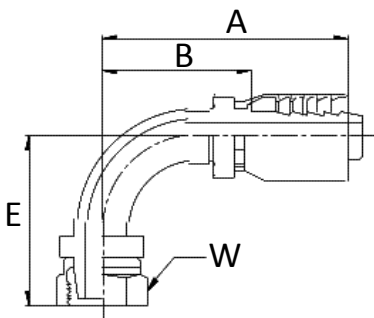
NML Series

DIN 20 078 A Light Series Metric Female - Swivel Straight

DIN 20 078 A Light Series Metric Female - Swivel 45° Elbow

DIN 20 078 A Light Series Metric Female - Swivel 90° Elbow

Part Number	Metric thread		Hose I.D & Type			A	W	B	E
						mm	mm	mm	mm
4NML14-04	M14x1.5	08L	-4	1/4	1W.2W	88	19	60	20
4NML16-06	M16x1.5	10L	-6	3/8	1W.2W	100	21	68	30
4NML18-06	M18x1.5	12L	-6	3/8	1W.2W	100	24	68	30
4NML20-08	M20x1.5	14L	-8	1/2	1W.2W	110	27	75	30
4NML26-10 4S	M26x1.5	18L	-10	5/8	4S	110	32	77	30
4NML30-12 4S	M30x1.5	22L	-12	3/4	4S	130	36	77	30
4NML36-16 4S	M36x1.5	28L	-16	1	4S	140	41	78	40



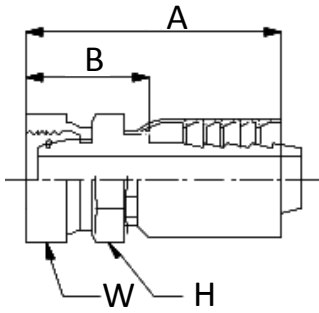
NML Series

DIN 20 078 A Light Series Metric Female - Swivel Straight

DIN 20 078 A Light Series Metric Female - Swivel 45° Elbow

DIN 20 078 A Light Series Metric Female - Swivel 90° Elbow

Part Number	Metric thread		Hose I.D & Type			A	W	B	E
						mm	mm	mm	mm
9NML14-04	M14x1.5	08L	-4	1/4	1W.2W	63	19	34	42
9NML16-06	M16x1.5	10L	-6	3/8	1W.2W	74	21	42	45
9NML18-06	M18x1.5	12L	-6	3/8	1W.2W	74	24	42	45
9NML22-08	M22x1.5	15L	-8	1/2	1W.2W	87	27	52	52
9NML26-10 4S	M26x1.5	18L	-10	5/8	4S	107	32	60	70
9NML30-12 4S	M30x1.5	22L	-12	3/4	4S	110	36	57	65
9NML36-16 4S	M36x1.5	28L	-16	1	4S	130	41	72	75



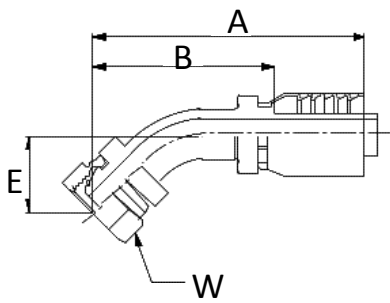
NOS Series

DIN 20 078 P Heavy Series Metric Female - Swivel Straight

DIN 20 078 P Heavy Series Metric Female - Swivel 45° Elbow

DIN 20 078 P Heavy Series Metric Female - Swivel 90° Elbow

Part Number	Metric thread		Hose I.D & Type			A	W	B	H
						mm	mm	mm	mm
NOS14-04	M14x1.5	06S	-4	1/4	1W.2W	59	19	31	17
NOS16-04	M16x1.5	08S	-4	1/4	1W.2W	60	21	31	17
NOS18-04	M18x1.5	10S	-4	1/4	1W.2W	60	24	31	17
NOS20-04	M20x1.5	12S	-4	1/4	1W.2W	61	27	32	17
NOS18-06	M18x1.5	10S	-6	3/8	1W.2W	66	24	34	19
NOS20-06	M20x1.5	12S	-6	3/8	1W.2W	66	27	34	21
NOS22-06	M22x1.5	14S	-6	3/8	1W.2W	68	27	35	23
NOS22-08	M22x1.5	14S	-8	1/2	1W.2W	74	27	37	23
NOS22-08 4S	M22x1.5	14S	-8	1/2	4S	74	27	37	23
NOS24-08	M24x1.5	16S	-8	1/2	1W.2W	77	32	40	23
NOS24-08 4S	M24x1.5	16S	-8	1/2	4S	77	32	40	23
NOS24-10	M24x1.5	16S	-10	5/8	1W.2W	77	32	40	27
NOS24-10 4S	M24x1.5	16S	-10	5/8	4S	87	32	40	27
NOS30P2-10	M30x2.0	20S	-10	5/8	1W.2W	76	36	40	27
NOS30P2-10 4S	M30x2.0	20S	-10	5/8	4S	88	36	40	27
NOS30P2-12	M30x2.0	20S	-12	3/4	1W.2W	83	36	40	32
NOS30P2-12 4S	M30x2.0	20S	-12	3/4	4S	93	36	40	32
NOS36P2-12	M36x2.0	25S	-12	3/4	1W.2W	85	41	42	32
NOS36P2-12 4S	M36x2.0	25S	-12	3/4	4S	96	41	42	32
NOS36P2-16	M36x2.0	25S	-16	1	1W.2W	90	41	44	38
NOS36P2-16 4S	M36x2.0	25S	-16	1	4S	106	41	44	38
NOS42P2-16	M42x2.0	35S	-16	1	1W.2W	98	50	48	~
NOS42P2-16 4S	M42x2.0	35S	-16	1	4S	110	50	48	~
NOS42P2-20	M42x2.0	38S	-20	1-1/4	1W.2W	110	50	50	~
NOS42P2-20 4S	M42x2.0	38S	-20	1-1/4	4S	120	50	50	~
NOS52P2-20	M52x2.0	38S	-20	1-1/4	1W.2W	117	60	55	~
NOS52P2-20 4S	M52x2.0	38S	-20	1-1/4	4S	127	60	55	~
NOS52P2-24 4S	M52x2.0	38S	-24	1-1/2	4S	135	60	61	~



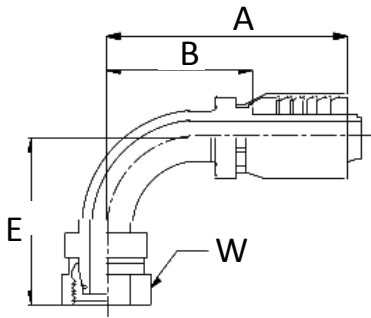
NOS Series

DIN 20 078 P Heavy Series Metric Female - Swivel Straight

DIN 20 078 P Heavy Series Metric Female - Swivel 45° Elbow

DIN 20 078 P Heavy Series Metric Female - Swivel 90° Elbow

Part Number	Metric thread	Hose I.D & Type				A mm	W mm	B mm	E mm
4NOS16-04	M16x1.5	08S	-4	1/4	1W.2W	90	21	58	25
4NOS18-04	M18x1.5	10S	-4	1/4	1W.2W	90	24	58	25
4NOS20-04	M20x1.5	12S	-4	1/4	1W.2W	90	27	58	25
4NOS18-06	M18x1.5	10S	-6	3/8	1W.2W	100	24	68	30
4NOS20-06	M20x1.5	12S	-6	3/8	1W.2W	100	27	68	30
4NOS22-06	M22x1.5	14S	-6	3/8	1W.2W	100	27	68	30
4NOS22-08	M22x1.5	16S	-8	1/2	1W.2W	122	27	82	25
4NOS22-08 4S	M22x1.5	16S	-8	1/2	4S	122	27	82	25
4NOS24-08	M24x1.5	16S	-8	1/2	1W.2W	122	32	82	25
4NOS24-08 4S	M24x1.5	16S	-8	1/2	4S	122	32	82	25
4NOS30P2-10	M30x2.0	20S	-10	5/8	1W.2W	135	36	94	37
4NOS30P2-10 4S	M30x2.0	20S	-10	5/8	4S	145	36	94	37
4NOS30P2-12	M30x2.0	20S	-12	3/4	1W.2W	140	36	97	40
4NOS30P2-12 4S	M30x2.0	20S	-12	3/4	4S	150	36	97	40
4NOS36P2-12	M36x2.0	25S	-12	3/4	1W.2W	150	41	105	40
4NOS36P2-12 4S	M36x2.0	25S	-12	3/4	4S	160	41	105	40
4NOS36P2-16	M36x2.0	25S	-16	1	1W.2W	150	41	105	41
4NOS36P2-16 4S	M36x2.0	25S	-16	1	4S	160	41	105	41
4NOS42P2-16	M42x2.0	30S	-16	1	1W.2W	150	50	105	41
4NOS42P2-16 4S	M42x2.0	30S	-16	1	4S	165	50	105	41
4NOS42P2-20	M42x2.0	38S	-20	1-1/4	1W.2W	175	50	105	50
4NOS42P2-20 4S	M42x2.0	38S	-20	1-1/4	4S	185	50	110	50
4NOS52P2-20	M52x2.0	38S	-20	1-1/4	1W.2W	175	60	115	52
4NOS52P2-20 4S	M52x2.0	38S	-20	1-1/4	4S	185	60	115	52
4NOS52P2-24 4S	M52x2.0	38S	-24	1-1/2	4S	190	60	120	65



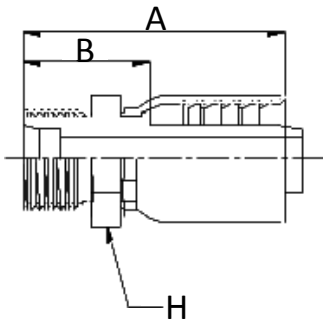
NOS Series

DIN 20 078 P Heavy Series Metric Female - Swivel Straight

DIN 20 078 P Heavy Series Metric Female - Swivel 45° Elbow

DIN 20 078 P Heavy Series Metric Female - Swivel 90° Elbow

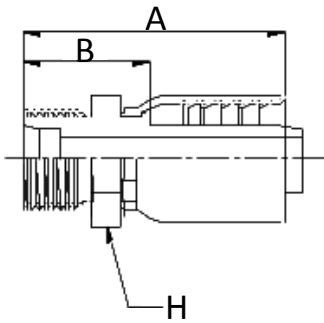
Part Number	Metric thread		Hose I.D & Type			A mm	W mm	B mm	E mm
9NOS16-04	M16x1.5	08S	-4	1/4	1W.2W	70	21	34	42
9NOS18-04	M18x1.5	10S	-4	1/4	1W.2W	70	24	34	42
9NOS20-04	M20x1.5	12S	-4	1/4	1W.2W	70	27	34	42
9NOS20-06	M20x1.5	12S	-6	3/8	1W.2W	75	27	42	45
9NOS22-06	M22x1.5	14S	-6	3/8	1W.2W	75	27	42	45
9NOS22-08	M22x1.5	16S	-8	1/2	1W.2W	88	27	52	55
9NOS22-08 4S	M22x1.5	16S	-8	1/2	4S	88	27	52	55
9NOS24-08	M24x1.5	16S	-8	1/2	1W.2W	88	32	52	55
9NOS24-08 4S	M24x1.5	16S	-8	1/2	4S	88	32	52	55
9NOS30P2-10	M30x2.0	20S	-10	5/8	1W.2W	92	36	56	61
9NOS30P2-10 4S	M30x2.0	20S	-10	5/8	2W.4S	102	36	56	61
9NOS30P2-12	M30x2.0	20S	-12	3/4	1W.2W	100	36	56	63
9NOS30P2-12 4S	M30x2.0	20S	-12	3/4	4S	110	36	56	63
9NOS36P2-12	M36x2.0	25S	-12	3/4	1W.2W	105	41	63	65
9NOS36P2-12 4S	M36x2.0	25S	-12	3/4	4S	115	41	63	65
9NOS36P2-16	M36x2.0	25S	-16	1	1W.2W	113	41	65	67
9NOS36P2-16 4S	M36x2.0	25S	-16	1	4S	127	41	65	67
9NOS42P2-16	M42x2.0	30S	-16	1	1W.2W	116	50	69	75
9NOS42P2-16 4S	M42x2.0	30S	-16	1	4S	132	50	69	75
9NOS42P2-20	M42x2.0	38S	-20	1-1/4	1W.2W	170	50	95	100
9NOS42P2-20 4S	M42x2.0	38S	-20	1-1/4	4S	170	50	95	100
9NOS52P2-20	M52x2.0	38S	-20	1-1/4	1W.2W	170	60	95	100
9NOS52P2-20 4S	M52x2.0	38S	-20	1-1/4	4S	170	60	95	100
9NOS52P2-24 4S	M52x2.0	38S	-24	1-1/2	4S	180	60	105	110



MFL Series

DIN 20 078 D Light Series Metric Male Stud

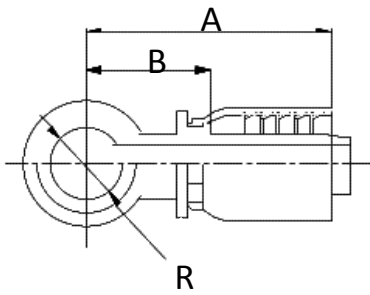
Part Number	Metric thread		Hose I.D & Type			A mm	H mm	B mm
MFL12-04	M12x1.5	06L	-4	1/4	1W.2W	52	17	24
MFL14-04	M14x1.5	08L	-4	1/4	1W.2W	52	17	24
MFL16-04	M16x1.5	10L	-4	1/4	1W.2W	54	17	24
MFL16-06	M16x1.5	10L	-6	3/8	1W.2W	60	19	27
MFL18-06	M18x1.5	12L	-6	3/8	1W.2W	58	21	27
MFL20-06	M20x1.5	14L	-6	3/8	1W.2W	58	21	27
MFL22-06	M22x1.5	15L	-6	3/8	1W.2W	60	23	27
MFL20-08	M20x1.5	14L	-8	1/2	1W.2W	63	23	27
MFL22-08	M22x1.5	15L	-8	1/2	1W.2W	63	23	27
MFL24-08	M24x1.5	17L	-8	1/2	1W.2W	64	27	27
MFL26-08	M26x1.5	18L	-8	1/2	1W.2W	65	27	27
MFL30-08	M30x1.5	22L	-8	1/2	1W.2W	69	36	30
MFL24-10 4S	M24x1.5	17L	-10	5/8	4S	77	27	32
MFL26-10 4S	M26x1.5	18L	-10	5/8	4S	77	27	32
MFL28-10 4S	M28x1.5	20L	-10	5/8	4S	79	32	33
MFL30-10 4S	M30x1.5	22L	-10	5/8	4S	81	36	35
MFL26-12	M26x1.5	18L	-12	3/4	1W.2W	77	27	34
MFL30-12 4S	M30x1.5	22L	-12	3/4	4S	88	36	34
MFL36-12 4S	M36x1.5	28L	-12	3/4	4S	90	41	36
MFL36-16 4S	M36x1.5	28L	-16	1	4S	99	41	36
MFL45-16	M45x1.5	35L	-16	1	1W.2W	94	50	36
MFL45-16 4S	M45x1.5	35L	-16	1	4S	110	50	36



MFS Series

DIN 20 078 E Heavy Series Metric Male Stud

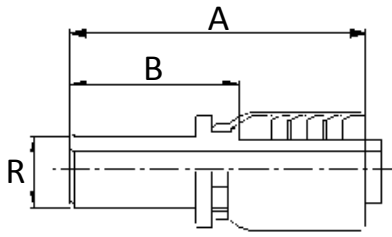
Part Number	Metric thread		Hose I.D & Type			A	H	B
						mm	mm	mm
MFS14-04	M14x1.5	06S	-4	1/4	1W.2W	52	17	24
MFS16-04	M16x1.5	08S	-4	1/4	1W.2W	54	17	24
MFS18-04	M18x1.5	10S	-4	1/4	1W.2W	54	21	24
MFS18-06	M18x1.5	10S	-6	3/8	1W.2W	58	21	27
MFS20-06	M20x1.5	12S	-6	3/8	1W.2W	58	21	27
MFS22-06	M22x1.5	14S	-6	3/8	1W.2W	58	23	27
MFS22-08	M22x1.5	14S	-8	1/2	1W.2W	63	23	27
MFS24-08	M24x1.5	16S	-8	1/2	1W.2W	64	27	27
MFS24-08 4S	M24x1.5	16S	-8	1/2	4S	64	27	27
MFS30P2-10 4S	M30x2.0	20S	-10	5/8	4S	81	36	35
MFS30P2-12 4S	M30x2.0	20S	-12	3/4	4S	88	36	34
MFS36P2-12 4S	M36x2.0	25S	-12	3/4	4S	90	41	36
MFS36P2-16 4S	M36x2.0	25S	-16	1	4S	99	41	36
MFS42P2-16	M42x2.0	30S	-16	1	1W.2W	94	50	40
MFS42P2-16 4S	M42x2.0	30S	-16	1	4S	104	50	40



SY Series

Banjo Union DIN 7642

Part Number	I.D.xThick	Hose I.D & Type			A mm	R mm	B mm
SY1010-04	10x10	-4	1/4	1W.2W	46	10	21
SY1212-04	12x12	-4	1/4	1W.2W	46	12	21
SY1414-04	14x14	-4	1/4	1W.2W	50	14	24
SY1414-06	14x14	-6	3/8	1W.2W	52	14	24
SY1616-06	16x16	-6	3/8	1W.2W	52	16	24
SY1818-06	18x18	-6	3/8	1W.2W	52	18	24
SY1820-08	18x20	-8	1/2	1W.2W	70	18	32
SY2020-08	20x20	-8	1/2	1W.2W	70	20	32
SY2424-08	24x24	-8	1/2	1W.2W	70	24	32



POD Series

BLight Series Metric Standpipe

Part Number	Metric thread		Hose I.D & Type			A mm	R mm	B mm
MFL12-04	M12x1.5	06L	-4	1/4	1W.2W	52	17	24
MFL14-04	M14x1.5	08L	-4	1/4	1W.2W	52	17	24
MFL16-04	M16x1.5	10L	-4	1/4	1W.2W	54	17	24
MFL16-06	M16x1.5	10L	-6	3/8	1W.2W	60	19	27
MFL18-06	M18x1.5	12L	-6	3/8	1W.2W	58	21	27
MFL20-06	M20x1.5	14L	-6	3/8	1W.2W	58	21	27
MFL22-06	M22x1.5	15L	-6	3/8	1W.2W	60	23	27
MFL20-08	M20x1.5	14L	-8	1/2	1W.2W	63	23	27
MFL22-08	M22x1.5	15L	-8	1/2	1W.2W	63	23	27
MFL24-08	M24x1.5	17L	-8	1/2	1W.2W	64	27	27
MFL26-08	M26x1.5	18L	-8	1/2	1W.2W	65	27	27
MFL30-08	M30x1.5	22L	-8	1/2	1W.2W	69	36	30
MFL24-10 4S	M24x1.5	17L	-10	5/8	4S	77	27	32
MFL26-10 4S	M26x1.5	18L	-10	5/8	4S	77	27	32
MFL28-10 4S	M28x1.5	20L	-10	5/8	4S	79	32	33
MFL30-10 4S	M30x1.5	22L	-10	5/8	4S	81	36	35
MFL26-12	M26x1.5	18L	-12	3/4	1W.2W	77	27	34
MFL30-12 4S	M30x1.5	22L	-12	3/4	4S	88	36	34
MFL36-12 4S	M36x1.5	28L	-12	3/4	4S	90	41	36
MFL36-16 4S	M36x1.5	28L	-16	1	4S	99	41	36
MFL45-16	M45x1.5	35L	-16	1	1W.2W	94	50	36
MFL45-16 4S	M45x1.5	35L	-16	1	4S	110	50	36

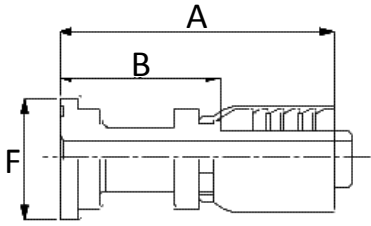


Flange

- PA Series
- PH Series



PA Series



SAE Flange - Standard Type

SAE Flange 45° Elbow - Standard Type

SAE Flange 90° Elbow - Standard Type

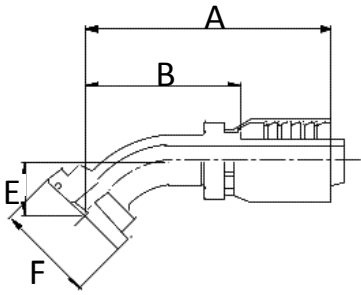
SAE Flange 90° Elbow - Standard Type (Long)

Part Number	End Connection	Hose I.D & Type			A mm	F mm	B mm
PA08-08 4S	1/2 (30.2mm)	-8	1/2	4S	93	30.2	56
PA10-08 4S	5/8 (34.0mm)	-8	1/2	4S	96	34.0	58
PA12-08 4S	3/4 (38.1mm)	-8	1/2	4S	100	38.1	60
PA10-10 4S	5/8 (34.0mm)	-10	5/8	4S	106	34.0	59
PA12-10 4S	3/4 (38.1mm)	-10	5/8	4S	109	38.1	62
PA08-12 4S	1/2 (30.2mm)	-12	3/4	4S	113	30.2	59
PA10-12 4S	5/8 (34.0mm)	-12	3/4	4S	109	34.0	62
PA12-12	3/4 (38.1mm)	-12	3/4	1W.2W	106	38.1	62
PA12-12 4S	3/4 (38.1mm)	-12	3/4	4S	116	38.1	62
PAP12-12 4S	3/4 (38.1mm)	-12	3/4	4S	116	38.1	62
PA16-12 4S	1 (44.5mm)	-12	3/4	4S	113	44.5	59
PA16-16	1 (44.5mm)	-16	1	1W.2W	106	44.5	59
PA16-16 4S	1 (44.5mm)	-16	1	4S	122	44.5	59
PAP16-16 4S	1 (44.5mm)	-16	1	4S	122	44.5	59
PA20-16 4S	1-1/4 (50.8mm)	-16	1	4S	128	50.8	65
PA16-20 4S	1 (44.5mm)	-20	1-1/4	4S	129	44.5	60
PA20-20 4S	1-1/4 (50.8mm)	-20	1-1/4	4S	148	50.8	75
PA24-20 4S	1-1/2 (60.3mm)	-20	1-1/4	4S	150	60.3	78
PA24-24 4S	1-1/2 (60.3mm)	-24	1-1/2	4S	154	60.3	78
PA32-24 4S	2 (71.4mm)	-24	1-1/2	4S	165	71.4	95
PA32-32 4S	2 (71.4mm)	-32	2	4S	175	71.4	95

PAP: SAE Flange Plug



PA Series



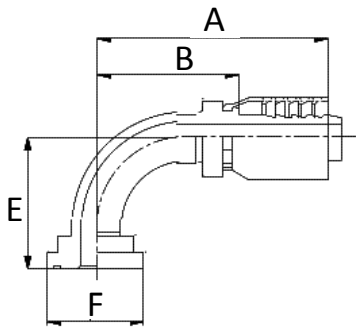
SAE Flange - Standard Type

SAE Flange 45° Elbow - Standard Type

SAE Flange 90° Elbow - Standard Type

SAE Flange 90° Elbow - Standard Type (Long)

Part Number	End Connection	Hose I.D & Type			A mm	F mm	B mm	E mm
		-						
4PA08-08 4S	1/2 (30.2mm)	-8	1/2	4S	115	30.2	77	25
4PA10-10 4S	5/8 (34.0mm)	-10	5/8	4S	125	34.0	77	30
4PA12-12	3/4 (38.1mm)	-12	3/4	1W.2W	125	38.1	80	30
4PA12-12 4S	3/4 (38.1mm)	-12	3/4	4S	135	38.1	80	30
4PA16-12 4S	1 (44.5mm)	-12	3/4	4S	160	44.5	107	30
4PA12-16 4S	3/4 (38.1mm)	-16	1	4S	158	38.1	85	30
4PA16-16	1 (44.5mm)	-16	1	1W.2W	134	44.5	85	30
4PA16-16 4S	1 (44.5mm)	-16	1	4S	150	44.5	85	30
4PA20-16 4S	1-1/4 (50.8mm)	-16	1	4S	170	50.8	107	35
4PA20-20 4S	1-1/4 (50.8mm)	-20	1-1/4	4S	185	50.8	115	35



PA Series

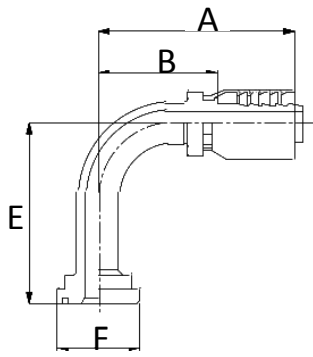
SAE Flange - Standard Type

SAE Flange 45° Elbow - Standard Type

SAE Flange 90° Elbow - Standard Type

SAE Flange 90° Elbow - Standard Type (Long)

Part Number	End Connection	Hose I.D & Type			A mm	F mm	B mm	E mm
9PA08-08 4S	1/2 (30.2mm)	-8	1/2	4S	95	30.2	58	45
9PA10-08 4S	5/8 (34.0mm)	-8	1/2	4S	98	34.0	58	50
9PA12-08 4S	3/4 (38.1mm)	-8	1/2	4S	98	38.1	58	60
9PA08-10 4S	1/2 (30.2mm)	-10	5/8	4S	98	30.2	58	50
9PA10-10 4S	5/8 (34.0mm)	-10	5/8	4S	105	34.0	58	50
9PA12-10 4S	3/4 (38.1mm)	-10	5/8	4S	105	38.1	60	60
9PA10-12 4S	5/8 (34.0mm)	-12	3/4	4S	115	34.0	62	60
9PA12-12	3/4 (38.1mm)	-12	3/4	1W.2W	105	38.1	62	60
9PA12-12 4S	3/4 (38.1mm)	-12	3/4	4S	115	38.1	62	60
9PA16-12 4S	1 (44.5mm)	-12	3/4	4S	120	44.5	75	60
9PA12-16 4S	3/4 (38.1mm)	-16	1	4S	130	38.1	62	60
9PA16-16	1 (44.5mm)	-16	1	1W.2W	114	44.5	65	65
9PA16-16 4S	1 (44.5mm)	-16	1	4S	130	44.5	65	65
9PA20-16 4S	1-1/4 (50.8mm)	-16	1	4S	135	50.8	70	65
9PA20-20 4S	1-1/4 (50.8mm)	-20	1-1/4	4S	150	50.8	80	90
9PA24-20 4S	1-1/2 (60.3mm)	-20	1-1/4	4S	150	60.3	80	90
9PA24-24 4S	1-1/2 (60.3mm)	-24	1-1/2	4S	180	60.3	105	110
9PA32-32 4S	2 (71.4mm)	-32	2	4S	205	71.4	130	122



PA Series

SAE Flange - Standard Type

SAE Flange 45° Elbow - Standard Type

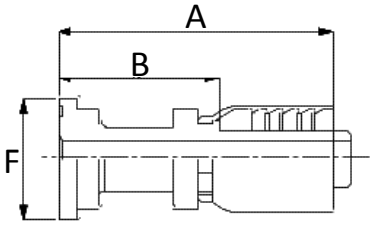
SAE Flange 90° Elbow - Standard Type

SAE Flange 90° Elbow - Standard Type (Long)

Part Number	End Connection	Hose I.D & Type			A	F	B	E
					mm	mm	mm	mm
9PA08-08 4S L85	1/2 (30.2mm)	-8	1/2	4S	90	30.2	53	85
9PA08-08 4S L130	1/2 (30.2mm)	-8	1/2	4S	90	30.2	53	130
9PA12-10 4S L95	3/4 (38.1mm)	-10	5/8	4S	105	38.1	60	95
9PA08-12 4S L130	1/2 (30.2mm)	-12	3/4	4S	115	30.2	62	130
9PA12-12 4S L90	3/4 (38.1mm)	-12	3/4	4S	115	38.1	62	90
9PA12-12 4S L110	3/4 (38.1mm)	-12	3/4	4S	115	38.1	62	110
9PA12-12 4S L150	3/4 (38.1mm)	-12	3/4	4S	115	38.1	62	150
9PA16-12 4S L90	1 (44.5mm)	-12	3/4	4S	115	44.5	62	90
9PA16-12 4S L110	1 (44.5mm)	-12	3/4	4S	115	44.5	62	110
9PA16-12 4S L130	1 (44.5mm)	-12	3/4	4S	128	44.5	62	130
9PA12-16 4S L110	3/4 (38.1mm)	-16	1	4S	130	38.1	62	110
9PA12-16 4S L150	3/4 (38.1mm)	-16	1	4S	130	38.1	62	150
9PA16-16 4S L90	1 (44.5mm)	-16	1	4S	135	44.5	72	90
9PA16-16 4S L110	1 (44.5mm)	-16	1	4S	135	44.5	72	110
9PA16-16 4S L130	1 (44.5mm)	-16	1	4S	135	44.5	72	130
9PA20-16 4S L110	1-1/4 (50.8mm)	-16	1	4S	150	50.8	80	110
9PA20-16 4S L150	1-1/4 (50.8mm)	-16	1	4S	150	50.8	80	150



PH Series



SAE Flange - Heavy Type

SAE Flange 45° Elbow - Heavy Type

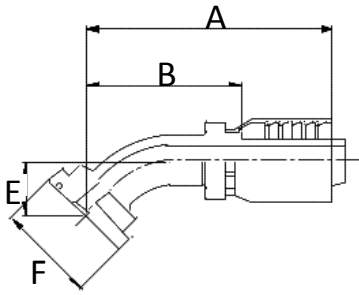
SAE Flange 90° Elbow - Heavy Type

SAE Flange 90° Elbow - Heavy Type (Long)

Part Number	End Connection	Hose I.D & Type			A mm	F mm	B mm
PH08-08 4S	1/2 (31.8mm)	-8	1/2	4S	93	31.8	56
PH12-08 4S	3/4 (41.3mm)	-8	1/2	4S	100	41.3	60
PH08-10 4S	1/2 (31.8mm)	-10	5/8	4S	101	31.8	57
PH12-10 4S	3/4 (41.3mm)	-10	5/8	4S	109	41.3	62
PH12-12 4S	3/4 (41.3mm)	-12	3/4	4S	116	41.3	62
PH16-12 4S	1 (47.6mm)	-12	3/4	4S	116	47.6	62
PH12-16 4S	3/4 (41.3mm)	-16	1	4S	119	41.3	62
PH16-16 4S	1 (47.6mm)	-16	1	4S	122	47.6	59
PH20-16 4S	1-1/4 (54.0mm)	-16	1	4S	128	54.0	65
PH16-20 4S	1 (47.6mm)	-20	1-1/4	4S	129	47.6	60
PH20-20 4S	1-1/4 (54.0mm)	-20	1-1/4	4S	148	54.0	75
PH24-20 4S	1-1/2 (63.5mm)	-20	1-1/4	4S	150	63.5	78
PH20-24 4S	1-1/4 (54.0mm)	-24	1-1/2	4S	154	54.0	75
PH24-24 4S	1-1/2 (63.5mm)	-24	1-1/2	4S	154	63.5	78
PH32-24 4S	2 (79.4mm)	-24	1-1/2	4S	165	79.4	95
PH32-32 4S	2 (79.4mm)	-32	2	4S	175	79.4	95



PH Series



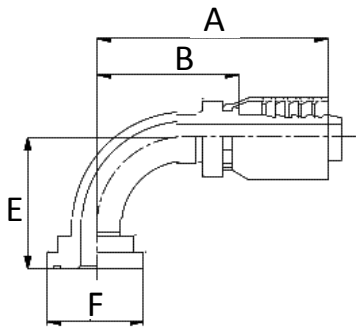
SAE Flange - Standard Type

SAE Flange 45° Elbow - Heavy Type

SAE Flange 90° Elbow - Heavy Type

SAE Flange 90° Elbow - Heavy Type (Long)

Part Number	End Connection	Hose I.D & Type			A	F	B	E
					mm	mm	mm	mm
4PH08-08 4S	1/2 (31.8mm)	-8	1/2	4S	115	31.8	77	25
4PH12-12 4S	3/4 (41.3mm)	-12	3/4	4S	140	41.3	90	35
4PH16-12 4S	1 (47.6mm)	-12	3/4	4S	160	47.6	107	30
4PH16-16 4S	1 (47.6mm)	-16	1	4S	165	47.6	105	35
4PH20-20 4S	1-1/4 (54.0mm)	-20	1-1/4	4S	185	54.0	115	35



PH Series

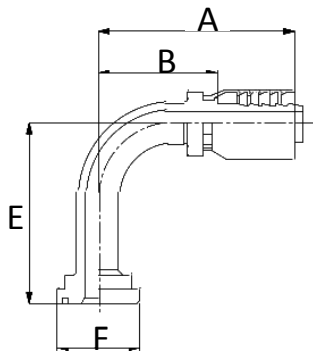
SAE Flange - Standard Type

SAE Flange 45° Elbow - Heavy Type

SAE Flange 90° Elbow - Heavy Type

SAE Flange 90° Elbow - Heavy Type (Long)

Part Number	End Connection	Hose I.D & Type			A	F	B	E
					mm	mm	mm	mm
9PH08-08 4S	1/2 (31.8mm)	-8	1/2	4S	95	31.8	58	45
9PH12-10 4S	3/4 (41.3mm)	-10	5/8	4S	105	41.3	60	60
9PH12-12 4S	3/4 (41.3mm)	-12	3/4	4S	115	41.3	63	60
9PH16-12 4S	1 (47.6mm)	-12	3/4	4S	120	47.6	75	60
9PH16-16 4S	1 (47.6mm)	-16	1	4S	130	47.6	68	65
9PH20-20 4S	1-1/4 (54.0mm)	-20	1-1/4	4S	180	54.0	115	80
9PH24-24 4S	1-1/2 (63.5mm)	-24	1-1/2	4S	180	63.5	105	110
9PH32-32 4S	2 (79.4mm)	-32	2	4S	205	79.4	130	122



PH Series

SAE Flange - Standard Type

SAE Flange 45° Elbow - Standard Type

SAE Flange 90° Elbow - Standard Type

SAE Flange 90° Elbow - Heavy Type (Long)

Part Number	End Connection	Hose I.D. & Type			A	F	B	E
					mm	mm	mm	mm
9PH12-12 4S L90	3/4 (41.3mm)	-12	3/4	4S	115	41.3	63	90
9PH12-12 4S L110	3/4 (41.3mm)	-12	3/4	4S	115	41.3	63	110
9PH16-12 4S L110	1 (47.6mm)	-12	3/4	4S	115	47.6	62	110
9PH16-16 4S L80	1 (47.6mm)	-16	1	4S	135	47.6	72	80
9PH16-16 4S L110	1 (47.6mm)	-16	1	4S	135	47.6	72	110
9PH20-20 4S L170	1-1/4 (54.0mm)	-20	1-1/4	4S	180	54.0	115	170
9PH20-20 4S L250	1-1/4 (54.0mm)	-20	1-1/4	4S	180	54.0	115	250

HYDRAULIC HOSES

 Balflex® YOKOHAMA 





Hose Assemblies

Each assembled kit is cut to your preferred length, fitted with one of our wide range of fittings and high-pressure couplings. Please feel free to contact us and we are certain we would be your solution in this field.



第伍機械股份有限公司
Di-Wu Machinery Co., Ltd.

HOSE ASSEMBLY REQUEST FORM

Customer contact: Company:

Address:

E-mail: Date Required:

TEST: Pressure Vacuum Untested Comments:

SIZE ID/OD/Length	I.D. (mm)	O.D. (mm)	Hose Length (m)	Assembly Length (m)	Quantity	Notes
<input type="text"/>	<input type="text"/>	<input type="text"/>	<input type="text"/>	<input type="text"/>	<input type="text"/>	<input type="text"/>

TEMPERATURE Material conveyed & environment	Internal	Max: <input type="text"/> °C Min: <input type="text"/> °C	Notes:
	External	Max: <input type="text"/> °C Min: <input type="text"/> °C	

APPLICATION Conditions of use	<input type="checkbox"/> Suction & Delivery (Pressure)	Notes:
	<input type="checkbox"/> Delivery (Pressure)	Notes:

MATERIAL Material being conveyed (Specify below)	<input type="checkbox"/> Water	<input type="checkbox"/> Air	<input type="checkbox"/> Abrasives	<input type="checkbox"/> Steam	<input type="checkbox"/> Petrol/Oil	<input type="checkbox"/> Chemical
	Notes: <input type="text"/>					

PRESSURE Assembly will be exposed to (Specify one value only)	kPa	PSI	Bar	Comments
	<input type="text"/>	<input type="text"/>	<input type="text"/>	<input type="text"/>

ENDS Orientation, style, type, attachment method (Provide DI-WU Industrial Part Number or name fitting, type, material & size)	End 1	Product Code: (If known)	Fitting name, material and size.			
	End 2	Product Code: (If known)	Fitting name, material and size.			
	Hose	Product Code: (If known)	Fitting name, material and size.			
	Fitting method (Choose one)	Crimp/Ferrule: <input type="checkbox"/> Alum <input type="checkbox"/> SS <input type="checkbox"/> Plated Steel	Clamps: <input type="checkbox"/> Worm <input type="checkbox"/> T Bolt <input type="checkbox"/> Semi SS <input type="checkbox"/> Full SS	Qty (Per end) <input type="text"/>	Bolt: <input type="checkbox"/> Standard Double <input type="checkbox"/> 4 & 6 Bolt <input type="checkbox"/> Safety Claw 2-Bolt	Other: <input type="text"/>

DELIVERY Testing, quality, packaging, time	Collect (DI-WU Branch)	Courier (Select)	Transport (Nominate)
	<input type="text"/>	<input type="checkbox"/> DI-WU to provide courier <input type="checkbox"/>	<input type="checkbox"/> DI-WU to provide transport <input type="checkbox"/>

Special instructions

Please print, fill, scan then email back to service@5thfittings.com.tw



HOSES

- Conforms to DIN 20 022 - 1SN, SAE 100R1 AT type
- Conforms to DIN 20 022 - 2SN, SAE 100R2 AT type
- Conforms to SAE 100R12
- Conforms to DIN 20 023 - 4SP, EN856 Type 4SP



Hydraulic Hose



Conforms to DIN 20 022 - 1SN, SAE 100R1 AT type

- **Construction:** Inner tube of oil resistant synthetic rubber, single braid of high tensile steel wire reinforcement and an oil and weather resistant, black synthetic rubber cover.
- **Application and Temperature Range:** Petroleum based hydraulic fluids and lubricating oils within a temperature range of -40°C to +100°C
- **Note:** Operating temperature in excess of +100°C may materially reduce the service life of hose assembly.

Hose I.D.		Reinforcement		Hose O.D.		Max. W.P.	Min. B.P.	Min. B.R.	Length
dash	inch	mm	spiral	max./min.(mm)	max./min.(mm)	psi(bar)	psi(bar)	inch(mm)	meter(feet)
-4	1/4	6.4	1W	11.7 10.6	14.1 12.6	3,250 (225.0)	13,000 (900.0)	4.02 (102)	60 (196.8)
-5	5/16	7.9	1W	13.3 12.1	15.7 14.2	3,250 (345.0)	13,000 (900.0)	4.49 (114)	60 (196.8)
-6	3/8	9.5	1W	15.7 14.5	18.1 16.6	3,000 (206.0)	12,000 (824.0)	5.00 (127)	60 (196.8)
-8	1/2	12.7	1W	19.0 17.5	21.5 20.0	2,500 (275.0)	10,000 (688.0)	7.01 (178)	60 (196.8)
-10	5/8	15.9	1W	22.2 20.6	24.7 23.2	2,000 (137.0)	8,000 (548.0)	7.99 (203)	60 (196.8)
-12	3/4	19.0	1W	28.2 24.6	28.6 27.1	1,750 (120.0)	7,000 (480.0)	9.49 (241)	60 (196.8)
-16	1	25.4	1W	34.1 32.5	36.6 35.1	1,275 (88.0)	5,100 (352.0)	12.01 (305)	20 (65.6)
-20	1-1/4	31.8	1W	41.7 39.3	44.8 42.8	900 (62.0)	3,600 (248.0)	16.50 (419)	20 (65.6)
-24	1-1/2	38.1	1W	48.0 45.6	52.0 49.5	725 (50.0)	2,900 (200.0)	20.00 (508)	20 (65.6)
-32	2	50.8	1W	61.9 58.7	65.9 63.4	575 (40.0)	2,300 (160.0)	25.00 (635)	20 (65.6)

Packing: Some coils may contain two splices in actual shipment.



Hydraulic Hose



Conforms to DIN 20 022 - 2SN, SAE 100R2 AT type

- **Construction:** Inner tube of oil resistant synthetic rubber, two braid of high tensile steel wire reinforcement and an oil and weather resistant, black synthetic rubber cover.
- **Application and Temperature Range:** Petroleum based hydraulic fluids and lubricating oils within a temperature range of -40°C to +100°C
- **Note:** Operating temperature in excess of +100°C may materially reduce the service life of hose assembly.

Hose I.D.			Reinforcement		Hose O.D.		Max. W.P.	Min. B.P.	Min. B.R.	Length
dash	inch	mm	spiral	max./min.(mm)	max./min.(mm)	psi(bar)	psi(bar)	inch(mm)	meter(feet)	
-4	1/4	6.4	2W	13.3 12.1	15.7 14.2	5,800 (400)	23,200 (1,600)	4.02 (102)	60 (196.8)	
-5	5/16	7.9	2W	14.9 13.7	17.3 15.8	5,250 (362.0)	21,000 (1,448.0)	4.49 (114)	60 (196.8)	
-6	3/8	9.5	2W	15.7 14.5	19.7 18.2	5,000 (340.0)	20,000 (1,360.0)	5.00 (127)	60 (196.8)	
-8	1/2	12.7	2W	20.6 19.0	23.1 21.6	4,270 (294.0)	17,080 (1,176.0)	7.01 (178)	60 (196.8)	
-10	5/8	15.9	2W	23.8 22.2	26.3 24.8	3,550 (245.0)	14,200 (980.0)	7.99 (203)	60 (196.8)	
-12	3/4	19.0	2W	27.8 26.2	30.2 28.7	3,100 (214.0)	12,400 (856.0)	9.49 (241)	60 (196.8)	
-16	1	25.4	2W	35.7 34.1	38.9 36.7	2,500 (172.0)	10,000 (688.0)	12.01 (305)	20 (65.6)	
-20	1-1/4	31.8	2W	45.6 43.2	49.6 47.1	2,250 (155.0)	9,000 (620.0)	16.50 (419)	20 (65.6)	
-24	1-1/2	38.1	2W	52.0 49.6	56.0 53.5	1,750 (120.0)	7,000 (480.0)	20.00 (508)	20 (65.6)	
-32	2	50.8	2W	64.7 62.3	68.6 66.1	1,250 (86.0)	5,000 (344.0)	25.00 (635)	20 (65.6)	

Packing: Some coils may contain two splices in actual shipment.



Hydraulic Hose



Conforms to SAE 100R12

- **Construction:** Inner tube of oil resistant sythetic rubber, four spiral plies of high tensile steel wire reinforcement and an oil and weather resistant, black synthetic rubber cover.
- **Application and Temperature Range:** Petroleum based hydraulic fluids and lubricating oils within a temperature range of -40°C to +100°C
- **Note:** Operating temperature in excess of +100? may materially reduce the service life of hose assembly.

Hose I.D.		Reinforcement		Hose O.D.		Max. W.P.	Min. B.P.	Min. B.R.	Length
dash	inch	mm	spiral	max./min.(mm)	max./min.(mm)	psi(bar)	psi(bar)	inch(mm)	meter(feet)
-8	1/2	12.7	4S	21.5 19.9	24.6 23.0	4,000 (275.0)	16,000 (1,100.0)	7.09 (180)	20 (65.6)
-10	5/8	15.9	4S	25.4 23.8	28.2 26.6	4,000 (275.0)	16,000 (1,100.0)	7.87 (200)	20 (65.6)
-12	3/4	19.0	4S	28.4 26.9	31.5 29.9	4,000 (275.0)	16,000 (1,100.0)	9.45 (240)	20 (65.6)
-16	1	25.4	4S	35.7 34.1	39.2 36.8	4,000 (275.0)	1,600 (1,100.0)	11.81 (300)	20 (65.6)
-20	1-1/4	31.8	4S	45.1 42.7	48.6 45.4	3,000 (206.0)	12,000 (824.0)	16.54 (420)	20 (65.6)
-24	1-1/2	38.1	4S	51.6 49.2	55.1 51.9	2,500 (172.0)	10,000 (688.0)	19.69 (500)	20 (65.6)
-32	2	50.8	4S	64.8 62.5	68.3 65.1	2,500 (172.0)	10,000 (688.0)	24.80 (630.0)	20 (65.6)

Packing: Some coils may contain two splices in actual shipment.



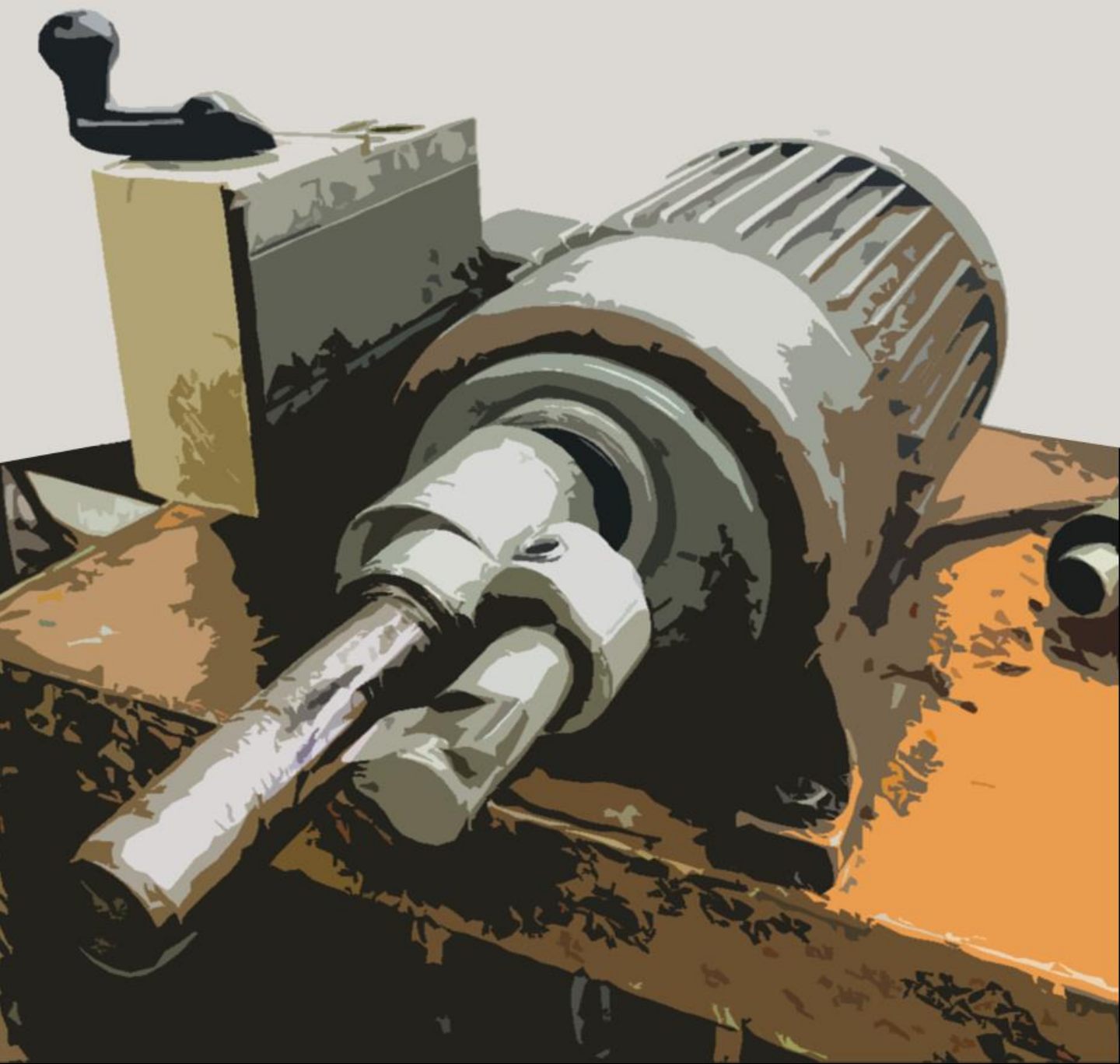
Hydraulic Hose



Conforms to DIN 20 023 - 4SP, EN856 Type 4SP

- **Construction:** Inner tube of oil resistant sythetic rubber, four spiral plies of high tensile steel wire reinforcement and an oil and weather resistant, black synthetic rubber cover.
- **Application and Temperature Range:** Petroleum based hydraulic fluids and lubricating oils within a temperature range of -40°C to +100°C
- **Note:** Operating temperature in excess of +100°C may materially reduce the service life of hose assembly.

Hose I.D.		Reinforcement		Hose O.D.		Max. W.P.	Min. B.P.	Min. B.R.	Length
dash	inch	mm	spiral	max./min.(mm)	max./min.(mm)	psi(bar)	psi(bar)	inch(mm)	meter(feet)
-8	1/2	12.7	4S	21.0 19.4	25.4 23.8	6,000 (415.0)	24,000 (1,660.0)	9.06 (230)	20 (65.6)
-10	5/8	15.9	4S	24.6 23.0	29.0 27.4	5,000 (345.0)	20,000 (1,380.0)	9.84 (250)	20 (65.6)
-12	3/4	19.0	4S	29.0 27.4	33.0 31.4	5,000 (345.0)	20,000 (1,380.0)	11.81 (300)	20 (65.6)
-16	1	25.4	4S	36.1 34.5	40.9 38.5	4,000 (275.0)	1,600 (1,100.0)	13.39 (340)	20 (65.6)
-20	1-1/4	31.8	4S	47.0 45.0	52.4 49.2	3,000 (206.0)	12,000 (824.0)	18.11 (460)	20 (65.6)
-24	1-1/2	38.1	4S	53.4 51.4	58.8 55.6	2,640 (182.0)	10,560 (728.0)	22.05 (560)	20 (65.6)
-32	2	50.8	4S	66.3 64.3	71.4 68.2	2,350 (162.0)	9,400 (648.0)	25.98 (660.0)	20 (65.6)



Others

- SK200 External Skiving Machine



SK200

External Skiving Machine

The SK200 is a handy tool for external skiving of wire-braided hydraulic hoses or multi-spiral hoses from size 04 to 32 (hose internal diameter 1/4" to 2"). To avoid tedious adjustments, it is specially designed to be adjusted to a precise diameter in one time. The compact size and easy-mounted device allows you to install it easily and quickly in the limited working space.

Application

- Hose types: Wire braided / multi-spiral hoses
- Diameters: 1/4" to 2" / up to 6 spirals

Equipment

- Number of tools:
 - set of 9pcs from 1/4" to 2" for wire braided hoses (optional)
 - set of 7pcs from 1/2" to 2" for multi-spiral hoses (optional)
- Blade: Heat treated steel
- Rotation speed: up to 200 RPM
- Pedal switch

